

MOTORISED SCREENS

TECHNICAL SPECIFICATIONS

ABOUT Motorised SCREENS

Blindtex Motorised Screens are an elegant remote-operated solution, perfect for outdoor & indoor installation.



Remote Control
Operated



Thermal / Acoustic
Insulation



Wind
Resistant



Fire
Resistant



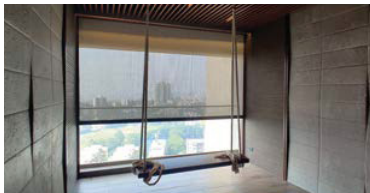
Indoor & Outdoor
Installation

Key Features



Click-button Operation

With our easy-to-use remote control, you can open and close the screens as you like them.



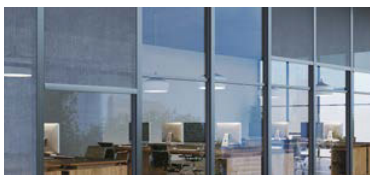
Clear Vision & Fresh-Air

Select from a range of fabrics that provide high-visibility plus fresh air.



Zip Guiding Profile

With a zip guiding profile on both sides, the screen remains tight and never gets loose.



Sun / Heat Protection

Our fabrics cut down the high temperature on the outside so that you are comfortable inside.



Sound Insulation

Our zip tech system and fabric help cut down the noise outside.

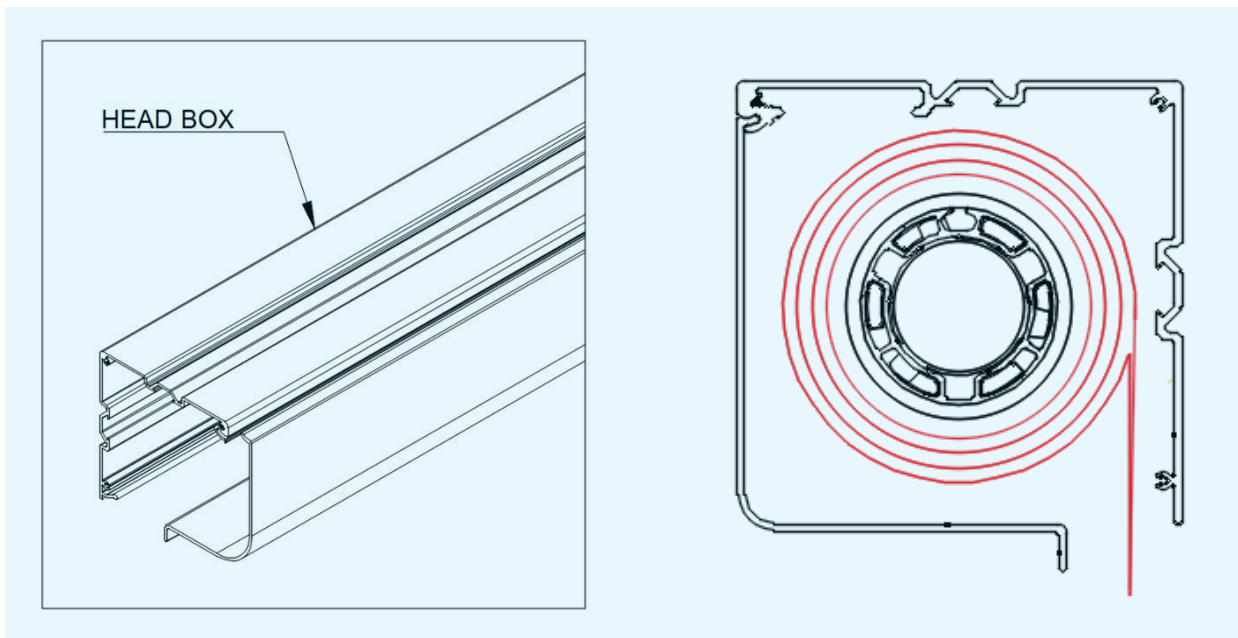
Box Type

Material: Extruded aluminium with powder coating.

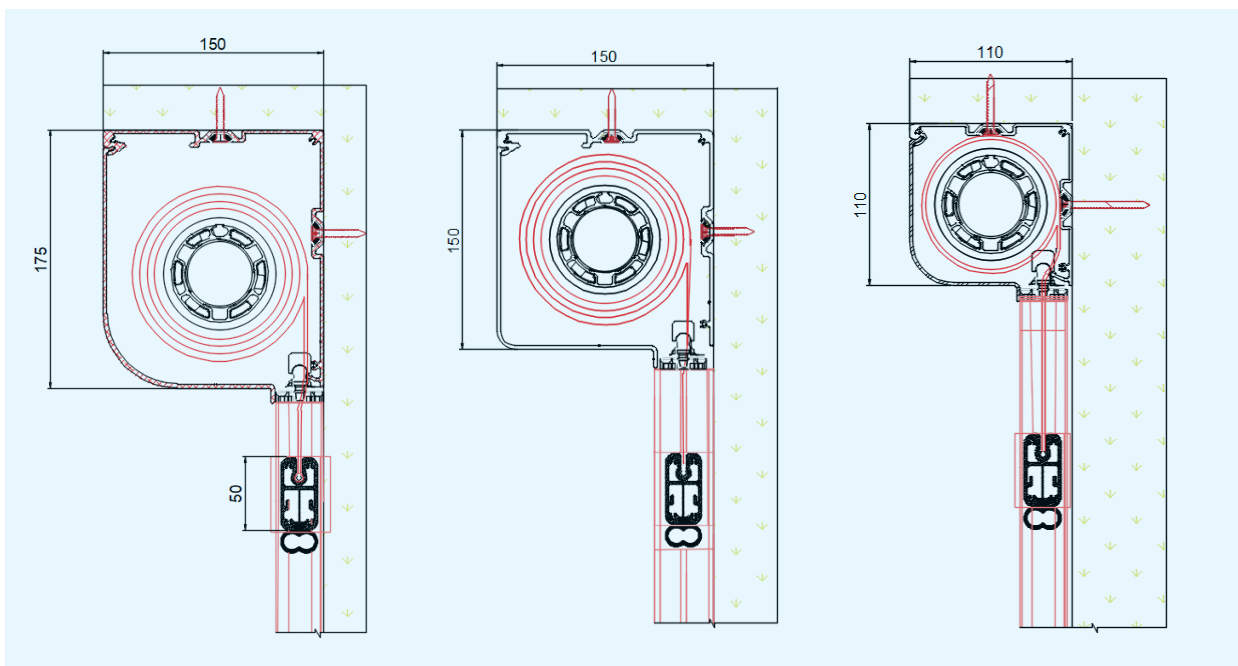
Available in four sizes: Type 90, Type 110, and Type 150 (only for pin guide mounting).

Fabric guiding profile:

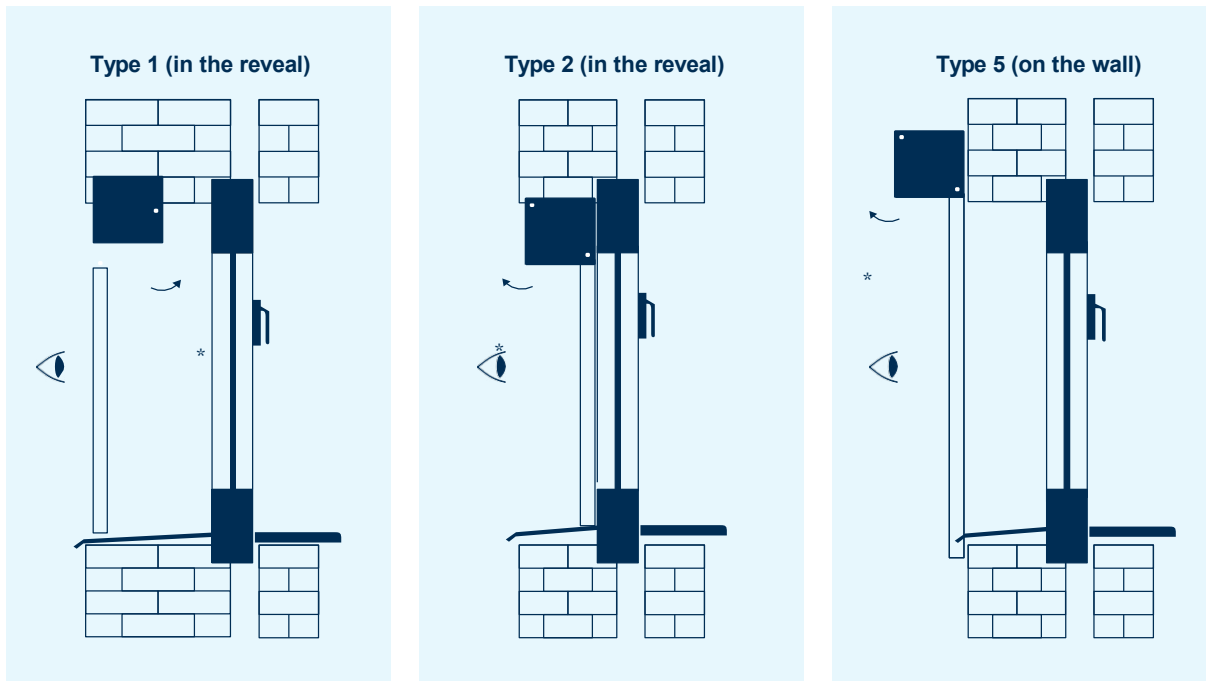
- Mounted on the box profile.
- Guide the fabric out of the box.
- Used as a stop of the bottom lath over the whole width of the box profile.
- Must be present to ensure a smooth fabric.



Guide mounting



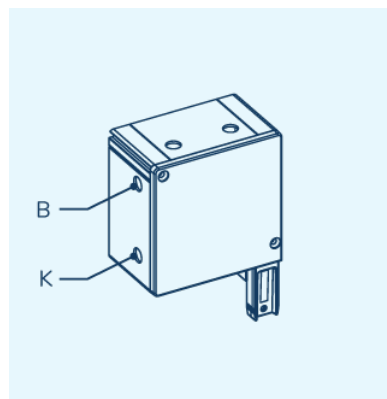
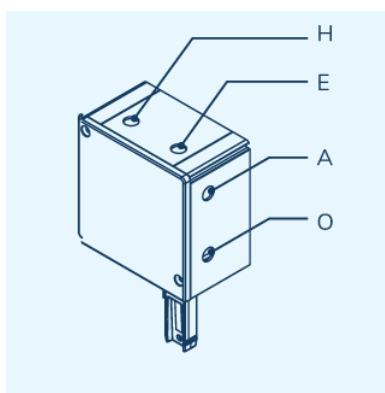
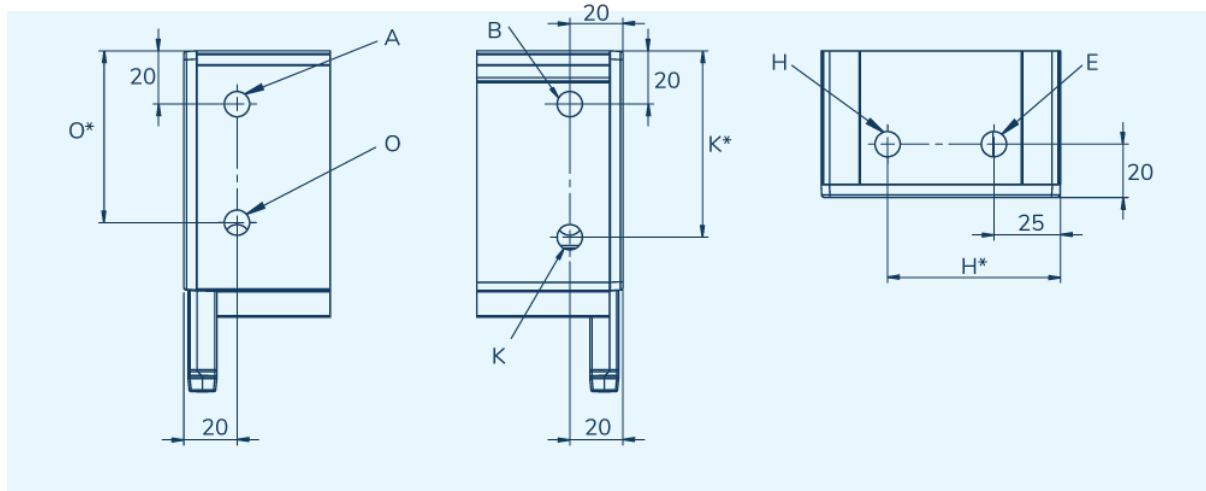
Mounting Type



* space to open the box

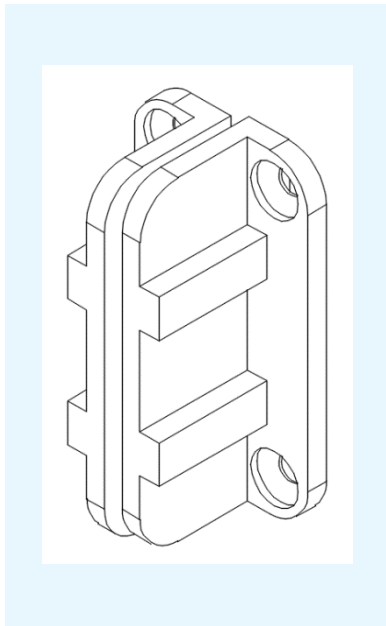
Motor Operation Exit

The exact location of the operation exit can be seen on the drawings.



Box	E	H*	K*	O*
110	25	85	90	85
150	25	125	130	125

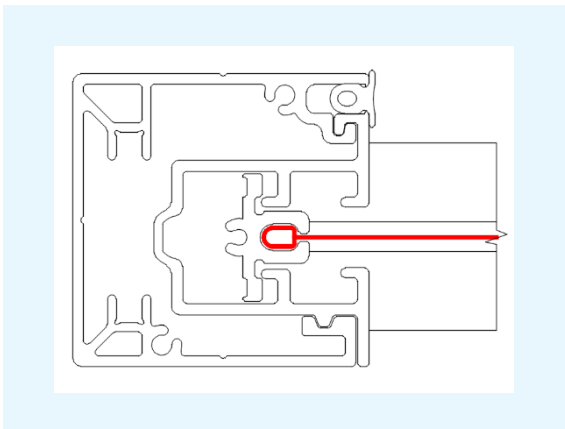
Bottom lath and sliding blocks



Bottom lath:

- Material: extruded aluminium profile with:
 - a powder coated finish.
 - a room for a weighting strip.
 - a fabric groove.
 - a groove for sealing rubber
- Fabric is attached to bottom lath without screws, using a plastic tube \varnothing 3 mm.
- Partially concealed in the screen box when fabric is rolled up
- Options: brush instead of rubber strip.

Guide



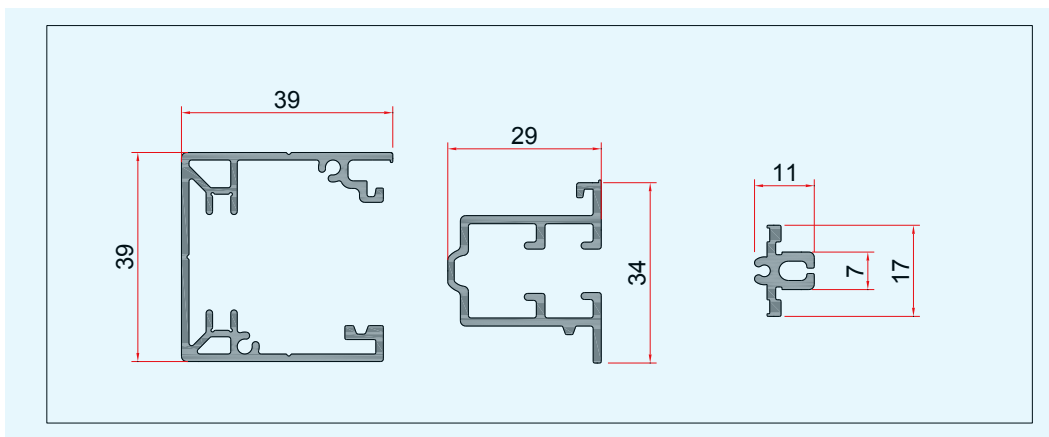
Material:

Extruded aluminium profiles with a powder coated finish.

Pin guide mounting:

The screen box is mounted onto the guides. The guides move over the pin of the consoles.

(See figure)



Fabric

We use TuffScreen®, a tightly woven and strong material fabric. The tighter the weave, the greater the day and night time privacy and protection.

- TuffScreen® provides durable protection from severe weather.
- Gives a little extra privacy.
- Comes with a 10-year warranty.

Characteristic	Reference Test Method	Nominal Results	
		Warp	Fill
Yarn Diameter (Inch)	TMS-TM-001	0.018	0.018
Tensile Strength			
A) Cut Strip Method (Lb)	ASTM D 5035	140	113
B) Grab Method (Lb)	ASTM D 5034	174	148
Tearing Strength			
Trapeziod Method (Lb)	ASTM D 1117	37	31
Yarn Slippage (Lb)	ASTM D 4912	31	27
Stiffness (Mg)	ASTM D 3656	264	145
Stretch (%)	TMS-TM-002	1.1	4
Set (%)	TMS-TM-002	0.2	0.8
Mesh Weight (Oz/sq Yd)	ASTM D 3776	7.1	
Fabric Thickness (Inch)	ASTM D 1777	0.027	
Bond Strength (Lb)	CS 248-64(5.5)	42	
Openness (%)	TMS-TM-009	45	
Blocking	FS L-S-125B(4.4.9)	Scale 1	
Colorfastness To 1200hrs			
Color Change According To Aatcc Gray Scale	TMS-TM-003	All Colors 4 Min	
Mullen Bursting Strength(Psi)			
Initial	FS L-S-125B(4.4.7)	308	

TuffScreen® is a brand of Phifer, and made in USA.

Product certified for low chemical emissions

ZIP Technology

Unique to this innovative system is the concealed, stainless steel spring in the guide rails. The spring does not wear, so the fabrics retain their tautness for many years. The system is extremely wind-resistant, up to 140 km/h.

Dimensions

SC800 H \ B	500	2500	2600	2700	2800	2900	3000	3100	3200	3300	3400	3500	3600	3700	3800	3900	4000	4100	4200	4300	4400	4500
400	1	1	1	1	1	1	1	1	1	1	1	1	1	1	1	1	1	1	1	1	1	1
1000	1	1	1	1	1	1	1	1	1	1	1	1	1	1	1	1	1	1	1	1	1	1
1500	1	1	1	1	1	1	1	1	1	1	1	1	1	1	1	1	1	1	1	1	1	1
1600	1	1	1	1	1	1	1	1	1	1	1	1	1	1	1	1	1	1	1	1	1	1
1700	1	1	1	1	1	1	1	1	1	1	1	1	1	1	1	1	1	1	1	1	1	1
2000	1	1	1	1	1	1	1	1	1	1	1	1	1	1	1	1	1	1	1	1	1	1
2100	1	1	1	1	1	1	1	1	1	1	1	1	1	1	1	1	1	1	1	1	1	1
2300	1	1	1	1	1	1	1	1	1	1	1	1	1	1	1	1	1	1	1	1	1	1
2400	1	1	1	1	1	1	1	1	1	1	1	1	1	1	1	1	1	1	1	1	1	1
2500	1	1	1	1	1	1	1	1	1	1	1	1	1	1	1	1	1	1	1	1	1	1
2600	1	1	1	1	1	1	1	1	1	1	1	1	1	1	1	1	1	1	1	1	1	1
2700	1	1	1	1	1	1	1	1	1	1	1	1	1	1	1	1	1	1	1	1	1	1
2800	1	1	1	1	1	1	1	1	1	1	1	1	1	1	1	1	1	1	1	1	1	1
2900	1	1	1	1	1	1	1	1	1	1	1	1	1	1	1	1	1	1	1	1	1	1
3000	1	1	1	1	1	1	1	1	1	1	1	1	1	1	1	1	1	1	1	1	1	1
3100	1	1	1	1	1	1	1	1	1	1	1	1	1	1	1	1	1	1	1	1	1	1
3200	1	1	1	1	1	1	1	1	1	1	1	1	1	1	1	1	1	1	1	1	1	1
3300	1	1	1	1	1	1	1	1	1	1	1	1	1	1	1	1	1	1	1	1	1	1
3400	1	1	1	1	1	1	1	1	1	1	1	1	1	1	1	1	1	1	1	1	1	1
3500	1	1	1	1	1	1	1	1	1	1	1	1	1	1	1	1	1	1	1	1	1	1
3600	1	1	1	1	1	1	1	1	1	1	1	1	1	1	1	1	1	1	1	1	1	1
3700	1	1	1	1	1	1	1	1	1	1	1	1	1	1	1	1	1	1	1	1	1	1
3800	1	1	1	1	1	1	1	1	1	1	1	1	1	1	1	1	1	1	1	1	1	1
3900	1	1	1	1	1	1	1	1	1	1	1	1	1	1	1	1	1	1	1	1	1	1
4000	1	1	1	1	1	1	1	1	1	1	1	1	1	1	1	1	1	1	1	1	1	1
4100	1	1	1	1	1	1	1	1	1	1	1	1	1	1	1	1	1	1	1	1	1	1
4200	1	1	1	1	1	1	1	1	1	1	1	1	1	1	1	1	1	1	1	1	1	1
4300	1	1	1	1	1	1	1	1	1	1	1	1	1	1	1	1	1	1	1	1	1	1
4400	1	1	1	1	1	1	1	1	1	1	1	1	1	1	1	1	1	1	1	1	1	1
4500	1	1	1	1	1	1	1	1	1	1	1	1	1	1	1	1	1	1	1	1	1	1
4600	1	1	1	1	1	1	1	1	1	1	1	1	1	1	1	1	1	1	1	1	1	1
4700	1	1	1	1	1	1	1	1	1	1	1	1	1	1	1	1	1	1	1	1	1	1
4800	1	1	1	1	1	1	1	1	1	1	1	1	1	1	1	1	1	1	1	1	1	1
4900	1	1	1	1	1	1	1	1	1	1	1	1	1	1	1	1	1	1	1	1	1	1
5000	1	1	1	1	1	1	1	1	1	1	1	1	1	1	1	1	1	1	1	1	1	1
5100	1	1	1	1	1	1	1	1	1	1	1	1	1	1	1	1	1	1	1	1	1	1
5200	1	1	1	1	1	1	1	1	1	1	1	1	1	1	1	1	1	1	1	1	1	1
5300	1	1	1	1	1	1	1	1	1	1	1	1	1	1	1	1	1	1	1	1	1	1
5400	1	1	1	1	1	1	1	1	1	1	1	1	1	1	1	1	1	1	1	1	1	1
5500	1	1	1	1	1	1	1	1	1	1	1	1	1	1	1	1	1	1	1	1	1	1
5600	1	1	1	1	1	1	1	1	1	1	1	1	1	1	1	1	1	1	1	1	1	1
5700	1	1	1	1	1	1	1	1	1	1	1	1	1	1	1	1	1	1	1	1	1	1
5800	1	1	1	1	1	1	1	1	1	1	1	1	1	1	1	1	1	1	1	1	1	1
5900	1	1	1	1	1	1	1	1	1	1	1	1	1	1	1	1	1	1	1	1	1	1
6000	1	1	1	1	1	1	1	1	1	1	1	1	1	1	1	1	1	1	1	1	1	1

Roll-up tables SC800

- 1 Box 90
- 2 Box 110
- 3 Box 150
- X Not possible

Fabric

TuffScreen®

Operation

Motor Altus 50

Axle

67 - 85 - 95

Box

90 - 110 - 150













BLINDTEX LTD



4B Wigan Road, Bolton,
Lancashire
BL3 5PZ - United Kingdom



Phone: +44 1204 954999



Email: sales@blindtex.co.uk



Web: www.blindtex.co.uk

SHARJAH:

Innov8 Products FZC
Area M6 - 10 Saif Zone, Sharjah,
United Arab Emirates

ABU DHABI:

Blindtex Curtains LLC
301, Level 3, Aldar HQ, Al Raha
Beach, Abu Dhabi

Tel: **+971 6557 8051**

Web: **www.blindtex.com**

Email: **sales@blindtex.com**

BAHRAIN

Blindtex Blinds & Curtains WLL

Office 728, Building 33,
Road 1802 Block 318, Exhibition Road Bahrain

Tel: **+973 3222 0440**

Web: **www.blindtex.bh**

Email: **bahrain@blindtex.com**